

\\corp.adis\data\Virtual_Workspace\workgroup\19377\Active\19370863503_data\gis_cad\gis\mxd\sem\193708635_VistaSands_EIMF\193708635_VistaSands_EIMF.aprx Revised: 2023-12-07 By: malvarez

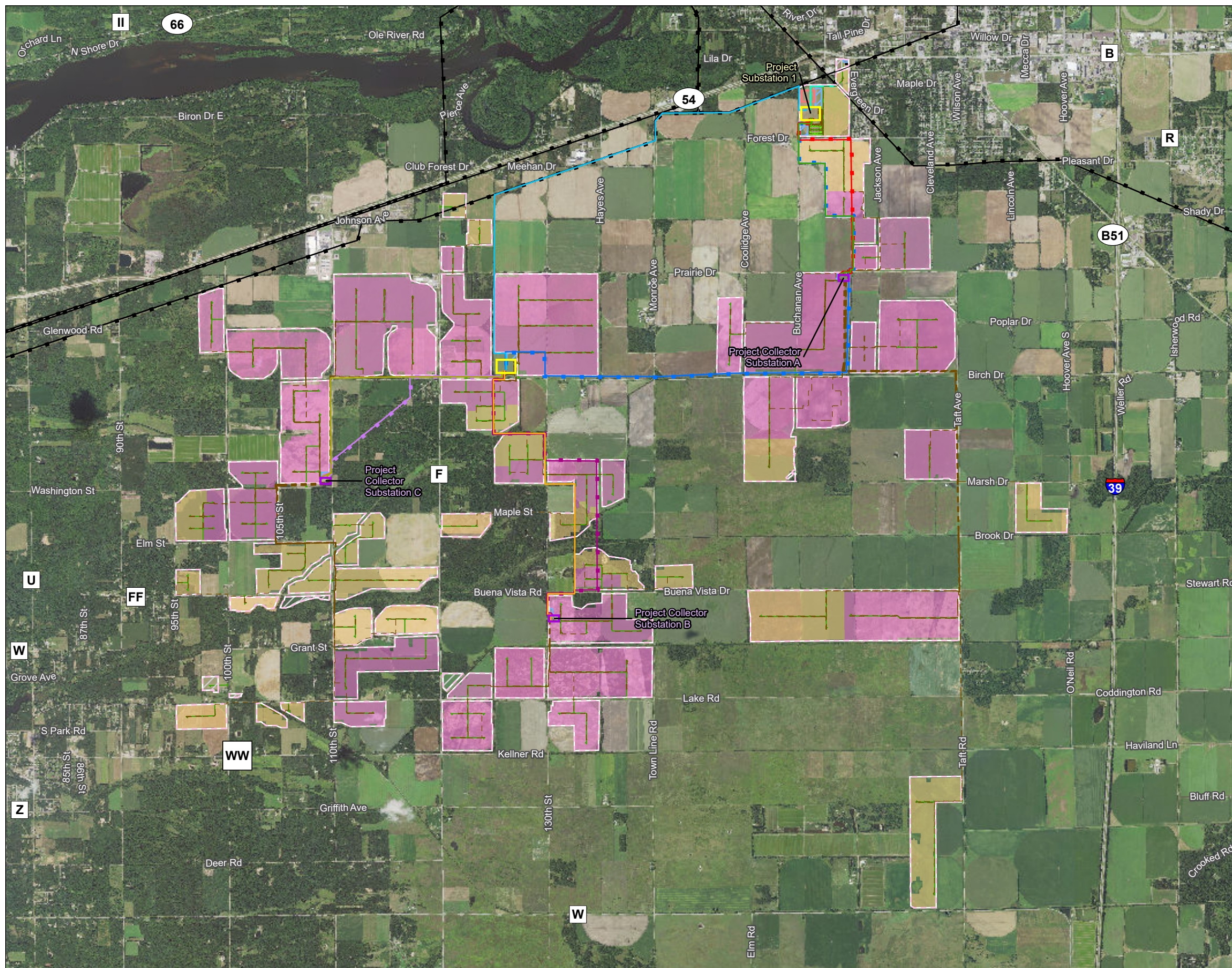


Figure No.

1

Title

Project Overview Map

Client/Project
Vista Sands Solar LLC
Vista Sands Solar Project

193708635

Project Location
Portage County
Wisconsin

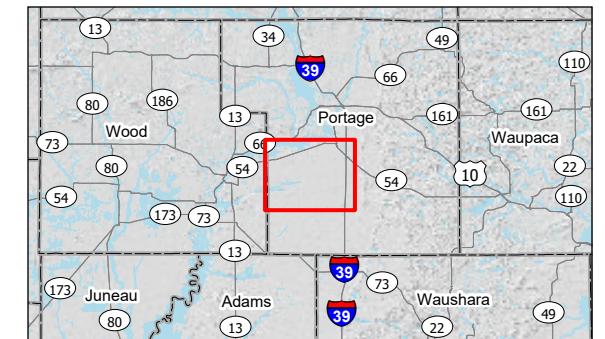
Prepared by RA on 2023-11-01
TR by SP on 2023-11-01
IR by MP on 2023-12-07



0 2,500 5,000 Feet
(At original document size of 11x17)
1:60,000

Legend

- | | | | |
|--|------------------------------|--|-------------------------------------------------|
| | Proposed Project Area | | Proposed Project 138kV A-1 Transmission Line |
| | Alternate Project Area | | Alternative Project 138kV A-1 Transmission Line |
| | Access Road | | Proposed Project 138kV B-2 Transmission Line |
| | Boundary Fence | | Alternative Project 138kV B-2 Transmission Line |
| | Switchyard | | Proposed Project 138kV C-2 Transmission Line |
| | Project Substation | | Alternative Project 138kV C-2 Transmission Line |
| | Project Collector Substation | | Proposed Project 345kV 2-1 Transmission Line |
| | O&M Area | | Alternative Project 345kV 2-1 Transmission Line |
| | Stormwater Basin | | |
| | Laydown Yard | | |
| | BESS Area | | |
| | Collection System | | |
| | Existing Transmission Line | | |
| | Solar Generator Tie Line | | |



Notes
1. Coordinate System: NAD 1983 HARN Wisconsin TM
2. Data Sources: Stantec, Vista Sands Solar LLC, WisDOT, WDNR, HIFLD
3. Background: NAIP 2022

